



DRV 703 • DRV 773  
(DN 15 - DN 32)



## Pressure reducing valve Female thread • Standard pressure Stainless steel

Pressure reducing valves of the series are diaphragm-controlled, spring-loaded pressure reducing valves. These valves are inlet pressure relieved.

## Media .....

The pressure reducers are suitable for use with aggressive waters and other aggressive liquids, but can also be used for air and neutral gases when larger flow rates are required.

The seals are suitable for drinking water and have ELL and W270 approval.

DGRL 2014/68/EU



## Classification societies .....

- DNV GL
- LR
- BV
- ABS
- CCS

## Customs tariff number .....

84811005



## Features

- pressure-relieved single seated valve
- diaphragm-controlled
- continuously adjustable outlet pressure
- max. inlet pressure up to 16 bar
- outlet pressure: 0,5 - 6 bar
- female thread acc. ISO 228, optionally with NPT-thread
- with integrated strainer filter
- replaceable inner parts
- double-ended G 1/4" manometer fitting (for outlet pressure)
- assembly position: any desired, preferably vertical
- minimum pressure difference (inlet/outlet pressure): 1 bar
- EPDM seals with ELL and W270 approval

## Pressures



max. 16 bar



0,5 - 6 bar

## Connections



Female thread  
acc. ISO 228  
from G 1/2" up to G 1 1/4"

## Materials

	body	spring bonnet	seals	wetted inner parts	max. temperature
standard version	stainless steel 1.4408	plastics	EPDM	plastics/ stainless steel 1.4404	75 °C



## Temperatures

Seals and wetted inner parts allow a maximum temperature of up to 75 °C.



from -30 °C up to +75 °C

## Seals and temperatures

EPDM -30 °C bis +75 °C



## Technical data

nominal size	15	20	25	32
G	1/2"	3/4"	1"	1 1/4"

## Pressures

max. 16 bar



max. inlet pressure [bar]

DRV 703

DRV 773

16

outlet pressure [bar]

DRV 703

DRV 773

1,5 - 6

0,5 - 4

0,5 - 6 bar



## Connections

Female thread  
from G 1/2" to G 1 1/4"



dimensions [mm]

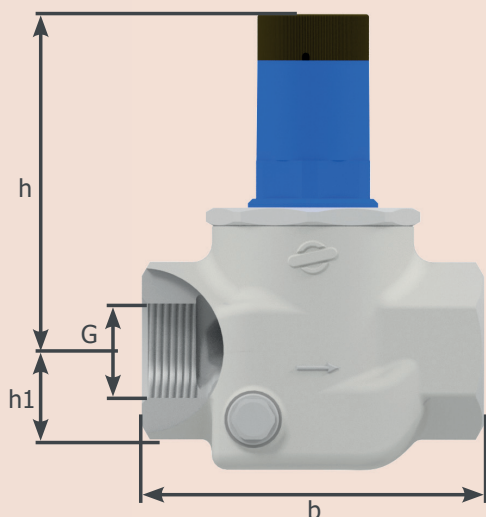
all types	G	1/2"	3/4"	1"	1 1/4"
	b	95	95	110	120
	h1	29	29	39	39
	h	109	109	109	109

weight [kg]

all types	1,0	0,9	1,7	1,6
-----------	-----	-----	-----	-----

kvs-value [m³/h]

all types	2,9	3,9	5,4	6,1
-----------	-----	-----	-----	-----





## Article number

nominal size	15	20	25	32
G	1/2"	3/4"	1"	1 1/4"

standard version

DRV 703	070302	070303	070304	070305
DRV 773	077302	077303	077304	077305

Standard article numbers are 6 digits, article numbers for additional options are 11 digits.  
(See option overview and configuration example)

## Options

### CC - connections

00 -	ISO 228	standard
30 -	NPT - ASME B1.20.1	

### E - elastomers

0 -	EPDM	with ELL & W270 approval
-----	------	--------------------------

### M - material of wetted inner parts

0 -	plastic/stainless steel 1.4404
-----	-----------------------------------

### F - finishes

0 -	without additional finishes
-----	-----------------------------

## Configuration example of an article number with additional options

inlet pressure: 10 bar  
seals: EPDM

outlet pressure: 4 bar  
temperature: 30 °C

connection: 1" NPT  
without additional finishes

art.no. standard version						-	C	C	M	E	F
0	7	0	3	0	4	-	3	0	0	0	0

## Manometer

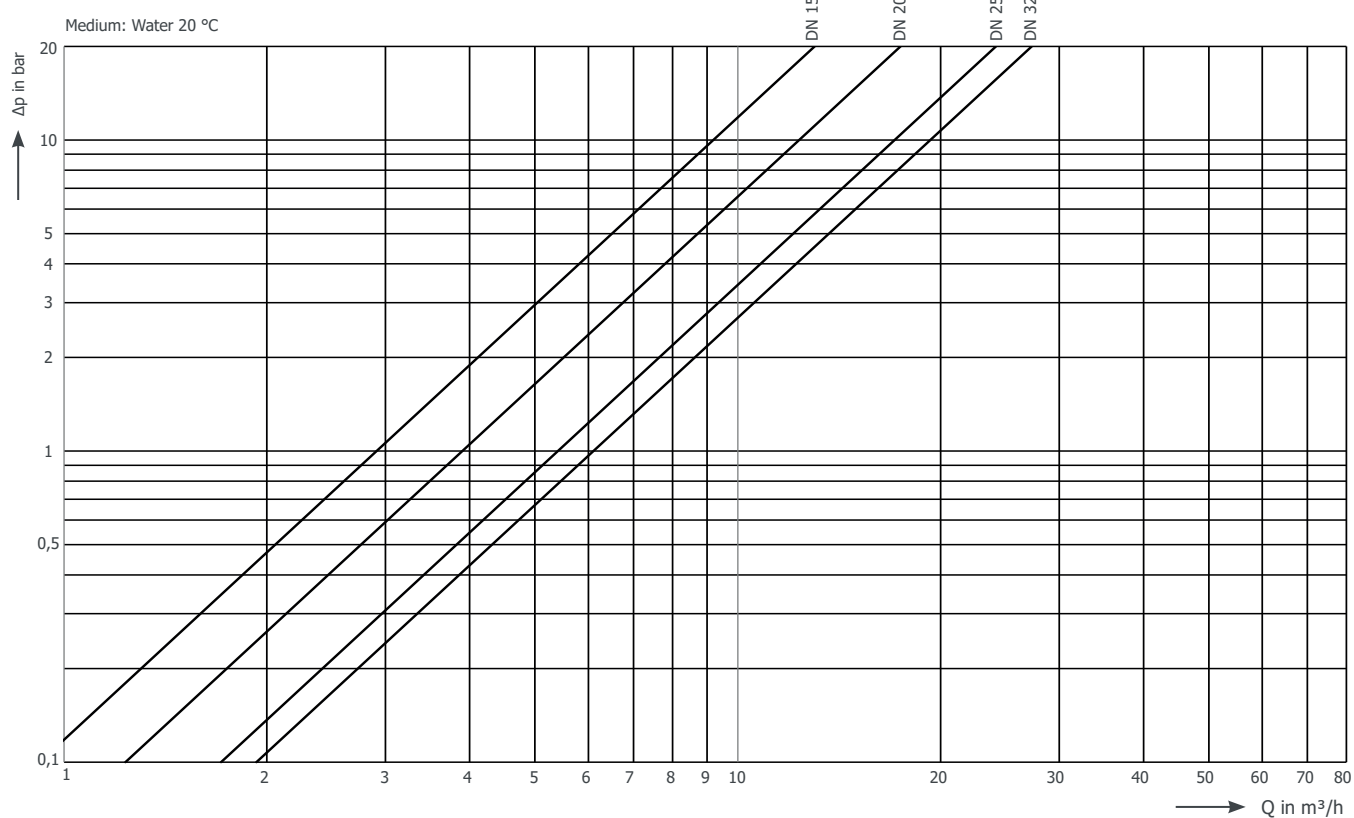
diameter	connection	body	pressure range	max. temp.	art.no.*
50 mm	G 1/4", central back	steel	0 - 10 bar	60 °C	009002
63 mm	G 1/4", central back	stainless steel	0 - 10 bar	130 °C	009014

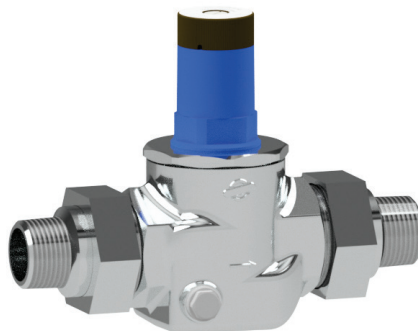
\*article numbers are 11 digits, see option overview and configuration example





## Flow diagram





DRV 703-R  
(DN 15 - DN 32)



## Pressure reducing valve Male thread • Standard pressure Stainless steel

Pressure reducing valves of the series are diaphragm-controlled, spring-loaded pressure reducing valves. These valves are inlet pressure relieved.

## Media .....

The pressure reducers are suitable for use with aggressive waters and other aggressive liquids, but can also be used for air and neutral gases when larger flow rates are required.

The seals are suitable for drinking water and have ELL and W270 approval.

DGRL 2014/68/EU



## Classification societies .....

- DNV GL
- LR
- BV
- ABS
- CCS

## Customs tariff number .....

84811005



## Features

- pressure-relieved single seated valve
- diaphragm-controlled
- continuously adjustable outlet pressure
- max. inlet pressure up to 16 bar
- outlet pressure: 1,5 - 6 bar
- male thread acc. ISO 7
- replaceable inner parts
- double-ended G 1/4" manometer fitting (for outlet pressure)
- assembly position: any desired, preferably vertical
- minimum pressure difference (inlet/outlet pressure): 1 bar
- EPDM seals with ELL and W270 approval

## Pressures



max. 16 bar



1,5 - 6 bar

## Connections



Male thread  
acc. ISO 7  
from R 1/2" up to R 1 1/4"

## Materials

	body	spring bonnet	seals	wetted inner parts	max. temperature
standard version	stainless steel 1.4408	plastics	EPDM	plastics/ stainless steel 1.4404	75 °C



## Temperatures

Seals and wetted inner parts allow a maximum temperature of up to 75 °C.



from -30 °C up to +75 °C

## Seals and temperatures

EPDM -30 °C bis +75 °C



## Technical data

nominal size	15	20	25	32
R	1/2"	3/4"	1"	1 1/4"

## Pressures

max. 16 bar



max. inlet pressure [bar]

DRV 703-R

16

outlet pressure [bar]

1,5 - 6 bar



DRV 703-R

1,5 - 6

## Connections

Male thread  
from R 1/2" to R 1 1/4"



dimensions [mm]

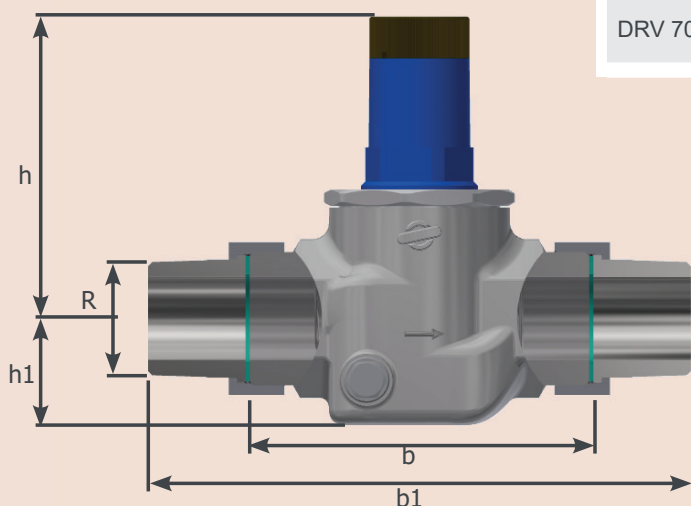
	R	1/2"	3/4"	1"	1 1/4"
	b	105	105	122	122
	b1	168	168	195	195
	h1	29	29	39	39
	h	109	109	109	109

weight [kg]

DRV 703-R	1,2	1,2	2,4	2,5
-----------	-----	-----	-----	-----

kvs-value [m³/h]

DRV 703-R	2,9	3,9	5,4	6,1
-----------	-----	-----	-----	-----





## Article number

nominal size	15	20	25	32
R	1/2"	3/4"	1"	1 1/4"

standard version

DRV 703-R	070302-R0870	070303-R0870	070304-R0870	070305-R0870
-----------	--------------	--------------	--------------	--------------

Article numbers are 11 digits. (See options overview and configuration example)

## Options

### CC - connections

R0 - ISO 7

### E - elastomers

7 - EPDM with ELL & W270 approval

### M - material of wetted inner parts

8 - plastics/stainless steel  
1.4404

### F - finishes

0 - without additional finishes

## Configuration example of an article number with additional options

inlet pressure: 10 bar  
seals: EPDM

outlet pressure: 4 bar  
temperature: 30 °C

connection: 1" ISO 7  
without additional finishes

art.no. standard version						-	C	C	M	E	F
0	7	0	3	0	4	-	R	0	8	7	0

## Manometer

diameter	connection	body	pressure range	max. temp.	art.no.*
50 mm	G 1/4", central back	steel	0 - 10 bar	60 °C	009002
63 mm	G 1/4", central back	stainless steel	0 - 10 bar	130 °C	009014

\*article numbers are 11 digits, see option overview and configuration example



## Flow diagram

