

## Ball valve with detachable welded end, full bore

Type KSL, DN 8-50 (3/8" - 2"), PN 40 (ANSI class 300)

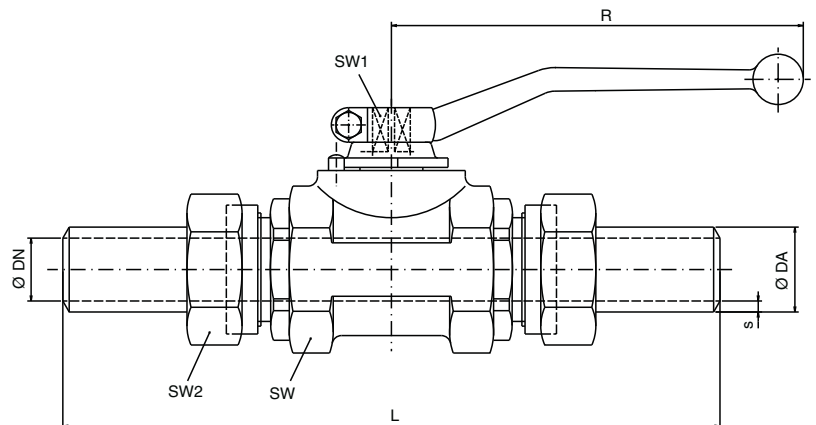
### Material standard:

Body: Forged carbon steel/carbon steel  
 Ball: Stainless steel  
 Stem: Stainless steel  
 Seats: PTFE  
 O-rings: EPDM



### Options:

- Steam design
- Stem extension up to DN 50/2", (Standard 60 and 100mm)



DN	DA	s	L	SW	SW1	SW2	R	Weight (kg)
8	15	2.3	180	24	8	27	60	0.4
10	17.2	2.3	180	30	8	32	90	0.6
12	17.2	2.3	200	36	10	32	100	0.8
15	21.3	2.6	205	41	10	36	130	0.9
20	26.9	3.2	210	46	10	41	130	1.2
25	33.7	3.2	225	55	12	50	180	1.7
32	42.4	2.9	270	75	16	55	205	2.4
40	48.3	3.2	295	85	16	65	205	4.0
50	60.3	3.6	330	105	16	80	205	6.4

All dimensions in mm or bar.

• Please state flow media, working pressure and temperature with your enquiry/order. •