

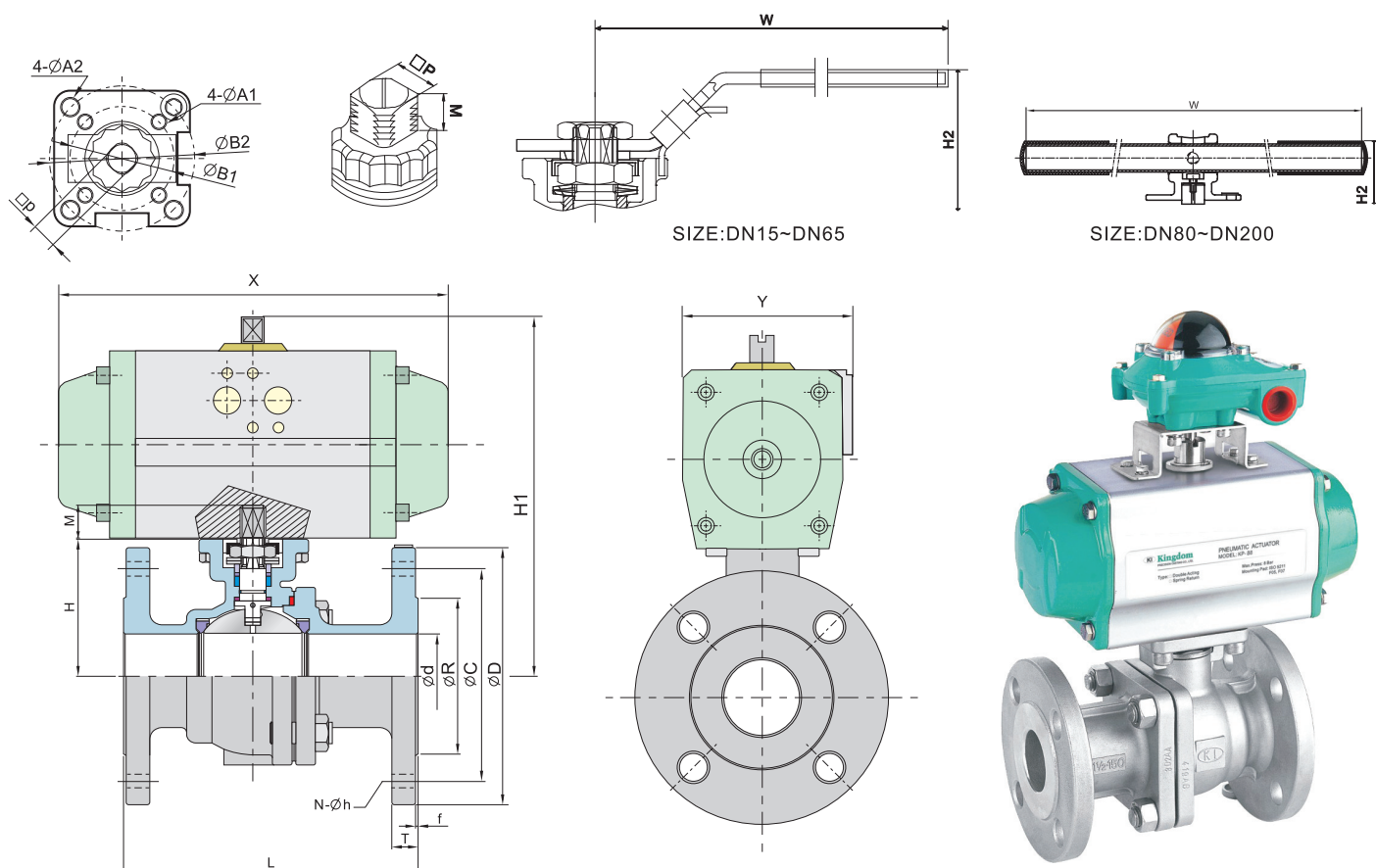
Typ KH24FL

DESIGN FEATURES:

- Built-in ISO 5211 Direct Mounting Pad for Easy Automation
- **Fire Safe** Design Approved
- Anti-static Devices for Ball-Stem-Body
- Blow-out Proof Stem
- Pressure Balance Hole in Ball Slot
- **TA-LUFT** Design Approved
- Casting Boss on Body for Draining
- Options: 1. Actuator 2. Limit Switch 3. Positioner

APPLICABLE STANDARDS:

- Design Rating: DIN 3357 / 1,2, EN 12516-1
- Fire Design: API 607 5th 2005, ISO 10497
- Face to Face:
DIN 3202 F17(F1 DN15~DN100 / F7 DN125~DN200)
F18(F4 DN15~DN100 / F5 DN125~DN200)
EN 558-1 Series27(DN15~DN200)
Series 1 (DN15~DN125)
- Wall Thickness: ASME B16.34, EN12516-1
- Flanged Ends: DIN EN1092-1 PN10-PN40
- Inspection & Testing: DIN 3230/3, EN 12266

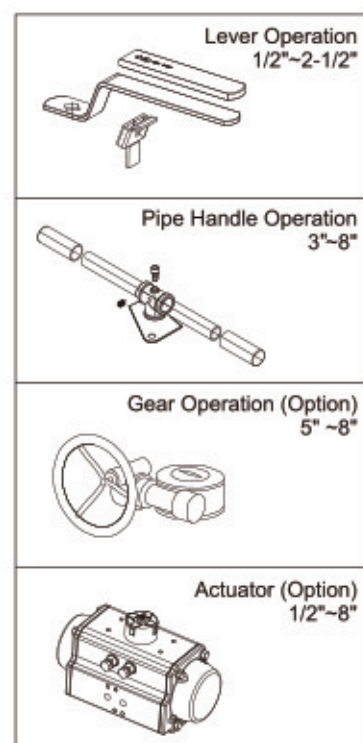
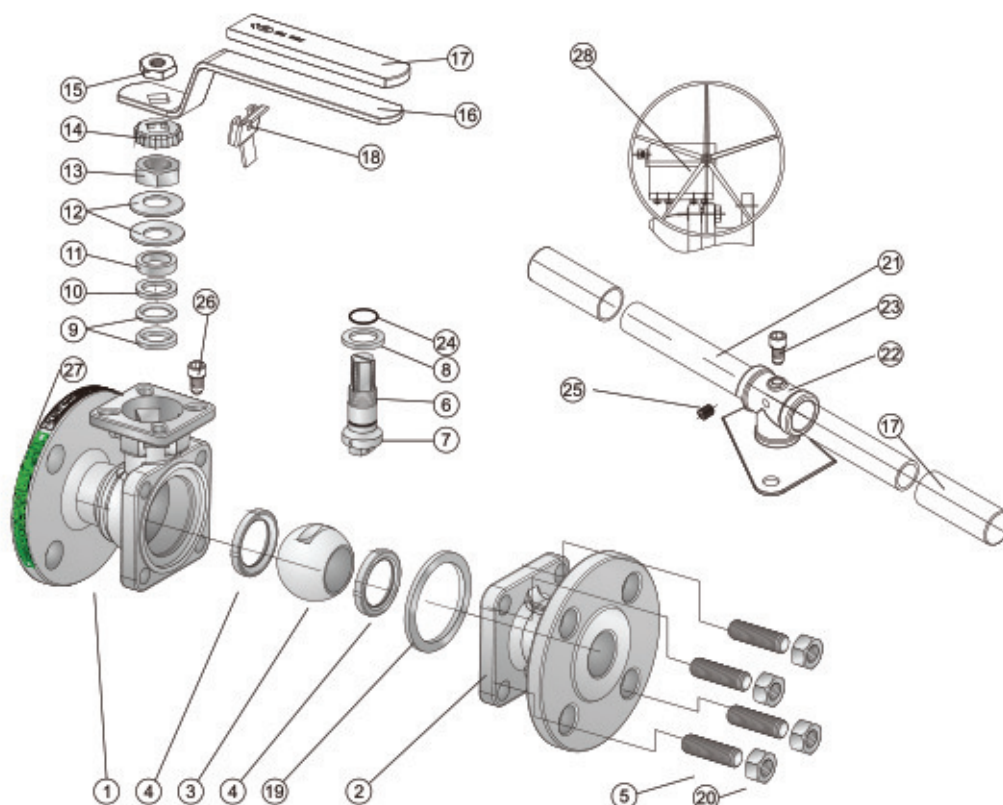


■ DIN PN10/16/25/40 (F1/F7, F4/F5)

Unit: mm

SIZE		PN	ød	L	*L	øR	øD	øC	f	T	N	øh	H	H1	M	P	A1	A2	B1	B2	X	Y	ISO 5211	P-Actuator	E-Actuator	Pressure
DN15	1/2"	10~40	15.0	115	130	45	95	65	2	16	4	14	48.0	145.0	9	9	6	6	36	42	144	72	F03-F04	KP50	KQ006	80PSI
DN20	3/4"	10~40	20.0	120	150	58	105	75	2	18	4	14	53.0	150.0	9	9	6	6	36	42	144	72	F03-F04	KP50	KQ006	80PSI
DN25	1"	10~40	25.0	125	160	68	115	85	2	18	4	14	58.5	168.5	11	11	6	7	42	50	164	84	F04-F05	KP63	KQ006	80PSI
DN32	1-1/4"	10~40	32.0	130	180	78	140	100	2	18	4	18	71.0	181.0	11	11	6	7	42	50	164	84	F04-F05	KP63	KQ006	80PSI
DN40	1-1/2"	10~40	38.0	140	200	88	150	110	3	18	4	18	76.0	204.0	14	14	7	9	50	70	208	96	F05-F07	KP75	KQ008	80PSI
DN50	2"	10~40	50.0	150	230	102	165	125	3	20	4	18	85.0	209.0	14	14	7	9	50	70	208	96	F05-F07	KP75	KQ008	80PSI
DN65	2-1/2"	10/16 25/40	63.5	170	290	122	185	145	3	18 22	4 8	18	101.5 107.0	243.5	17	17	9	11	70	102	247	108	F07-F10	KP88	KQ015	80PSI
DN80	3"	10/16 25/40	76.0	180	310	138	200	160	3	20 24	8	18	111.5 117.0	265.5	17	17	9	11	70	102	268	123	F07-F10	KP100	KQ015	80PSI
DN100	4"	10/16 25/40	100.0	190	350	158 162	220 235	180 190	3	20 24	8	18 22	140.0	335.0	22	22	N/A	11	N/A	102	345	151	F10	KP125	KQ020	80PSI
DN125	5"	10/16 25/40	125.0	325	400	188	250 270	210 220	3	22 26	8	18 26	183.0	414.0	27	27	14	N/A	125	N/A	450	202	F12	KP160	KQ030	80PSI
DN150	6"	10/16 25/40	150.0	350	450	212 218	285 300	240 250	3	22 28	8	18 26	204.0	435.0	27	27	14	N/A	125	N/A	450	202	F12	KP160	KQ030	80PSI
DN200	8"	10 16 25 40	200.0	400	550	268 278 285	340 360 375	295 310 320	3	24 30 34	8 12	18 26 30	252.5	555.5	27	27	14	N/A	125	N/A	545	224	F12	KP200	KQ050	80PSI

"L" for Series F4/F5
"L" for Series F1/F7



MATERIAL OF CONSTRUCTION

NO.	PART	MATERIAL		
		ANSI/JIS/DIN	ANSI/JIS/DIN	ANSI/JIS/DIN
1	Body	A351-CF8M/SCS14A/1.4408	A351-CF8/SCS13A/1.4308	A216-WCB/SCPH2/1.0619
2	End Cap	A351-CF8M/SCS14A/1.4408	A351-CF8/SCS13A/1.4308	A216-WCB/SCPH2/1.0619
3	Ball	A351-CF8M/SCS14A/1.4408	A351-CF8/SCS13A/1.4308	
4	Ball Seat	TFM1600/PTFE/RTFE		
5	Bolting	A193-B8 (For ANSI ball valves) / A2-70 (for DIN ball Valves)		A193-B7 (For ANSI ball valves) / 8.8 (For DIN/JIS ball valves)
6	Stem	SUS316	SUS304	
7	Anti-Stastic	SUS316	SUS304	
8	Thrust washer	PTFE		
9	Stem Packing	PTFE/GRAFOIL*		
10	Bushing	50%SS+50%PTFE/SUS304*		
11	Gland	SUS316		
12	Belleville Washer	SUS301		
13	Stem Nut	A194-8		
14	Stop-Lock-Cap	SUS304		
15	Handle Nut	A194-8		
16	Lever	SUS304		
17	Handle Sleeve	VINYL PLASTIC		
18	Lock Device	SUS304		
19	Body Gasket	PTFE/316 SPIRAL WOUND+GRAFOIL*		
20	Nut	A194-8 (For ANSI ball valves) / A2-70(For DIN/JIS ball valves)		194-2H (For ANSI ball valves) / 8.8(For DIN/JIS ball valves)
21	Pipe Handle(3"-8")	A53+Zn PLATED		
22	Handle Adapter(3"-8")	CF8		
23	Bolting (3"-8")	A2-70		
24	O-Ring	FKM		
25	Set Screwed(3"-8")	SUS304		
26	Stop Bolt	A193-B8		
27	Nameplate	SUS304		
28	Worm Gear	WCB		

*Materials for KV-L60 (Fire-Safe Type)

JUSTIN GORAED s.p.-ATIS
Levstikova ulica 24, 4226 Žiri

Tel.:04 510 5530
Fax:04 510 5531

E-mail: atis@armature.si
WWW: www.armature.si