

3 - PC Casting Ball Valve Full Port, Direct Mount, 1000WOG, High Performance

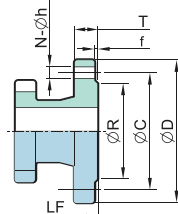
KH34IDSC (Thread) KH34IDBW/SW (BW or SW Weld End) KH34IDFL (Flanged)

FEATURES:

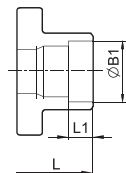
- Built-in ISO 5211 Direct Mounting Pad and Square Stem for Easy Automation
- Anti-Static Devices for Ball-Stem-Body
- Blow-out Proof Stem
- Pressure Balance Hole in Ball Slot
- Pre-Load 2 Belleville Washers to Self-adjust Packing
- **TA-LUFT** Design Approved
- Options: 1. Actuator 2. Limit Switch 3. Positioner

STANDARDS:

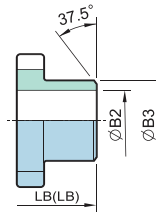
- Design: ASME B16.34, MSS SP-110
- Wall Thickness: EN 12516-3
- Pipe Thread **KV-L30**: ASME B1.20.1, BS21
DIN 2999 / 259, ISO 228 / 1
JIS B0203, ISO 7 / 1
- Butt Weld **KV-L31**: ASME B16.25 ($\phi B2$ Sch 40)
 $\phi B2$ Available in Sch 10, 20
- Socket Weld **KV-L32**: ASME B16.11
- Flanged End **KV-L3F**: ASME B16.5 CLASS 150/300
DIN EN1092-1 PN10-PN40
JIS B2238 10K / 20K
- Inspection & Testing: MSS SP-110, EN 12266



FLANGED END
PN10-40 F1

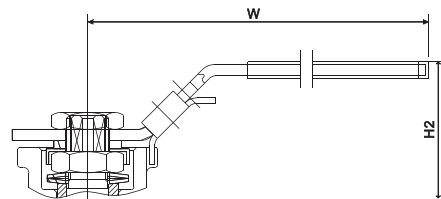
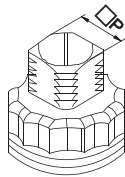
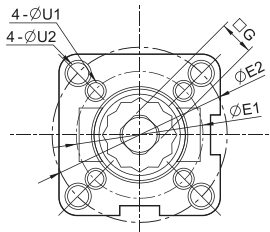


SOCKET WELD END

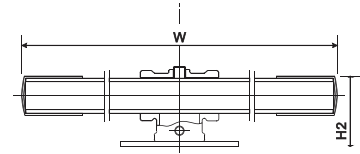


LB (Butt-welding End)

LE (Extended Butt-welding End)

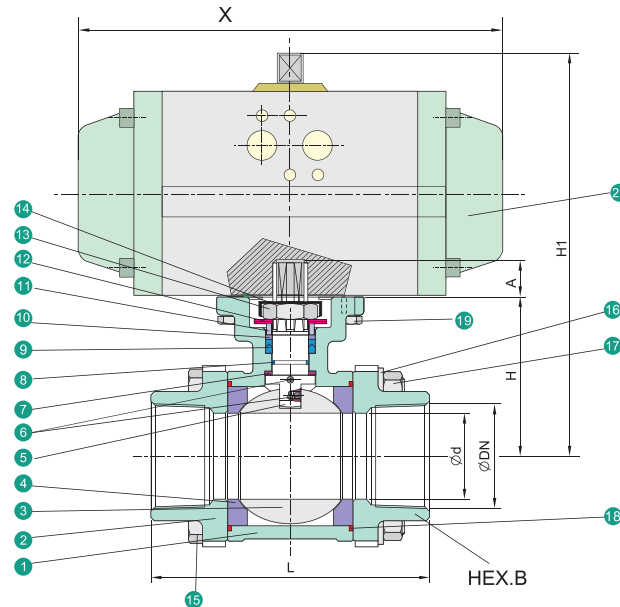


SIZE: 1/4" ~ 3"



SIZE: 4"

NO.	PART NAME	MATERIALS		
1	Body	CF8M	CF8	WCB
2	Cap (Thread)	CF8M	CF8	WCB
	Cap (Welding)	CF3M		
3	Ball	CF8M	CF8	
4	Ball Seat	TFM 1600 / PTFE / RTFE		
5	Stem	SUS 316	SUS 304	
6	Anti-Static Device	SUS 316	SUS 304	
7	Thrust Washer		PTFE	
8	O-Ring		FKM	
9	Stem Packing		PTFE	
10	Bushing	50%SS+50%PTFE		
11	Gland	SUS 316		
12	Belleville Washer	SUS 301		
13	Stem Nut	A194-8		
14	Stop-Lock-Cap	SUS 304		
15	Bolting	A193-B8		
16	Bolt Washer	SUS 304		
17	Bolt Nut	A194-8		
18	Body Gasket	PTFE		
19	Hex Bolting	A193-B8		
20	Actuator	Pneumatic KP / Electric KQ		



Unit: mm

SIZE	Ød	L	LB	LE	LF	H	H1	ØE1	ØE2	G	ØU1	ØU2	A	ØD	ØC	ØR	T	f	N	Øh	L1	ØB1	ØB2	ØB3	X	P-Actuator	E-Actuator	Pressure
1/4"	10.6	75.0	70.0	165	—	42.0	—	36	42	9	6	6	9	—	—	—	—	—	—	—	10	14.2	9.3	18	144	KP50	KQ006	80PSI
3/8"	12.7	75.0	70.0	165	—	42.0	—	36	42	9	6	6	9	—	—	—	—	—	—	—	10	17.8	12.7	18	144	KP50	KQ006	80PSI
1/2"	15.0	75.0	75.0	165	130	42.0	169	36	42	9	6	6	9	95	65	45	16	2	4	14	10	21.8	15.8	22	144	KP50	KQ006	80PSI
3/4"	20.0	80.0	90.0	190	150	48.5	177	36	50	9	6	7	9	105	75	58	18	2	4	14	13	27.3	20.9	28	144	KP50	KQ006	80PSI
1"	25.0	90.0	100.0	216	160	58.5	200	42	50	11	6	7	11	115	85	68	18	2	4	14	13	34.0	26.7	34	164	KP63	KQ006	80PSI
1-1/4"	32.0	110.0	110.0	229	180	63.0	215	42	70	11	6	9	11	140	100	78	18	2	4	18	16	42.8	35.1	43	164	KP63	KQ006	80PSI
1-1/2"	38.0	120.0	125.0	241	200	71.3	234	50	70	14	7	9	14	150	110	88	18	3	4	18	16	48.9	40.9	50	208	KP75	KQ008	80PSI
2"	50.0	140.0	150.0	292	230	78.2	241	50	70	14	7	9	14	165	125	102	20	3	4	18	17	61.4	52.5	61	208	KP75	KQ008	80PSI
2-1/2"	63.5	185.0	190.0	330	290	100.0	291	70	102	17	9	11	17	185	145	122	22	3	8	18	17	74.0	62.7	76	248	KP88	KQ015	80PSI
3"	76.0	205.0	220.0	356	310	108.5	313	70	102	17	9	11	17	200	160	138	24	3	8	18	17	90.0	78.0	92	268	KP100	KQ015	80PSI
4"	100.0	240.0	270.0	432	350	140.0	400	—	102	22	—	11	22	235	190	162	24	3	8	22	20	115.4	102.4	115	345	KP125	KQ020	80PSI

*M3 Face to Face dimensions are available