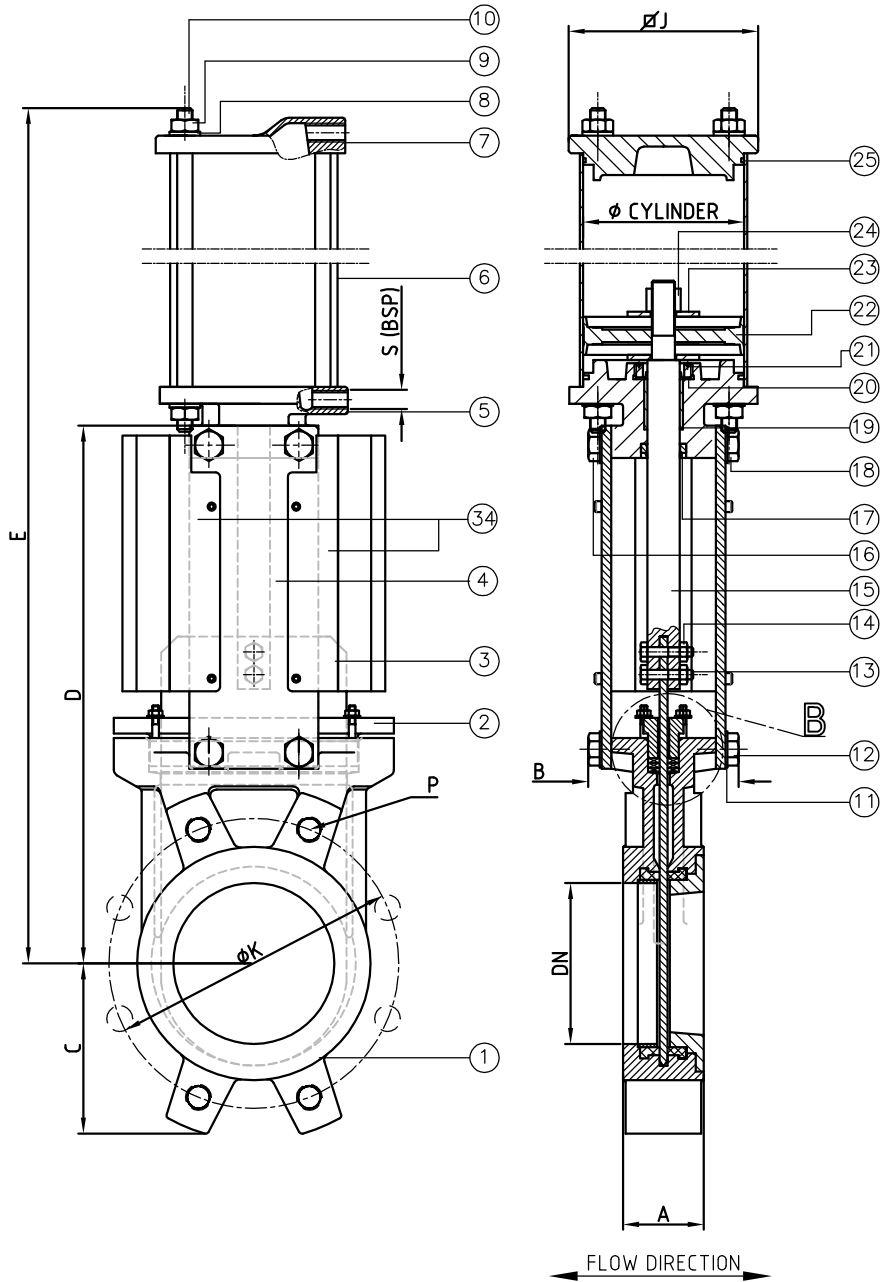
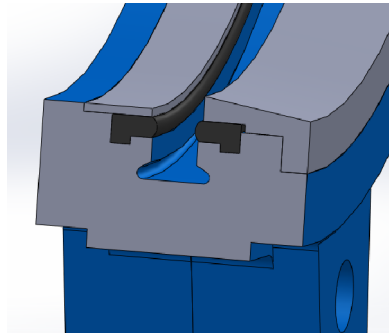
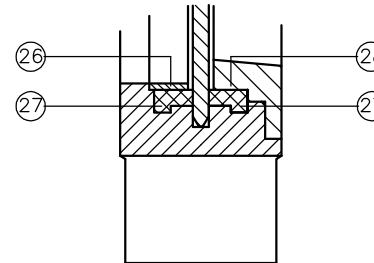


KNIFE GATE VALVE 200EA D/A(PNEUMATIC ACTUATOR)

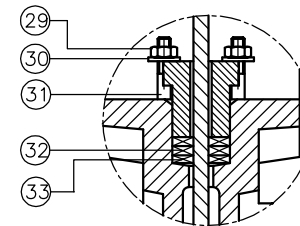


DN	INCHES	A	B	C	D	E	Ø CYLINDER	Ø J	S (B.S.P)	DN	INCHES	Ø K	No.HOLES	P	
												PN 10	ANSI 150	PN 10	ANSI 150
50	2"	40	90	60	240	410	80	102,5	1/4"	50	2"	125	120,6	4	M16 W 5/8"
65	2 1/2"	40	90	68	270	456	80	102,5	1/4"	65	2 1/2"	145	139,7	4	M16 W 5/8"
80	3"	50	90	90	295	500	80	102,5	1/4"	80	3"	160	152,4	8	M16 W 5/8"
100	4"	50	90	105	335	560	100	122	1/4"	100	4"	180	190,5	8	M16 W 5/8"
125	5"	50	100	118	370	640	125	147	1/4"	125	5"	210	215,9	8	M16 W 3/4"
150	6"	60	100	135	418	716	125	147	1/4"	150	6"	240	241,3	8	M20 W 3/4"
200	8"	60	120	170	522	880	160	182	1/4"	200	8"	295	298,4	8	M20 W 3/4"
250	10"	70	120	202	625	1042	200	229	1/4"	250	10"	350	361,9	12	M20 W 7/8"
300	12"	70	120	240	725	1182	200	229	1/4"	300	12"	400	431,8	12	M20 W 7/8"
350	14"	96	192	255	845	1360	250	281	3/8"	350	14"	460	476,2	16	M20 W 1"
400	16"	100	192	295	945	1540	250	281	3/8"	400	16"	515	539,7	16	M24 W 1"
450	18"	106	192	318	1045	1675	300	343	3/8"	450	18"	565	577,8	20	M24 W 1 1/8"
500	20"	110	192	345	1148	1840	300	343	3/8"	500	20"	620	635	20	M24 W 1 1/8"
600	24"	110	290	405	1360	2145	300	343	3/8"	600	24"	725	749,3	20	M27 W 1 1/4"

SEAT:



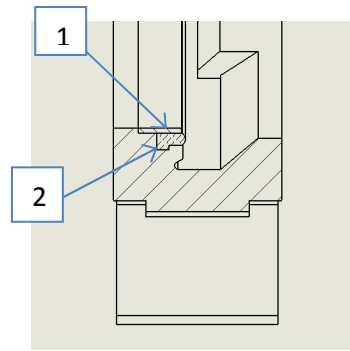
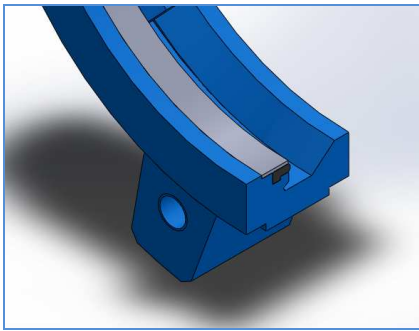
DETAIL B



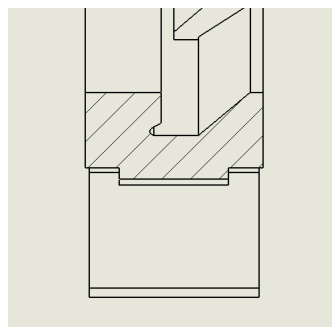
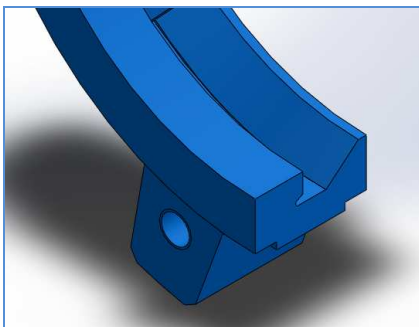
REF.	DENOMINATION	MATERIAL	MATERIAL
1	Body	Cast iron GG25	SS316
2	Packing gland	Aluminium/GGG50	SS316
3	Gate	SS304L	SS316L
4	Support plate	Steel	Steel
5	Lower cup	Aluminium	Aluminium
6	Pneumatic tube	Aluminium	Aluminium
7	Upper cup	Aluminium	Aluminium
8	Washer	Steel	A2
9	Nut	Steel	A2
10	Tie rod	Steel	A2
11	Grower washer	Steel	A2
12	Bolts	Steel	A2
13	Union studs stem-gate	Steel	A2
14	Union nuts stem-gate	Steel	A2
15	Stem	SS303	SS303
16	Nut	Steel	Steel
17	Scraper	NBR	NBR
18	Actuator fixing nut	Steel	Steel
19	Gasket	Bronze	Bronze
20	Sealing ring	NBR	NBR
21	Sealing gland	SS316	SS316
22	Piston rod	NBR	NBR
23	Washer	Steel	A2
24	Nut	Steel	A2
25	Sealing o'ring	EPDM	EPDM
26	Sealing Ring	SS316	SS316
27	Seat	EPDM*	EPDM*
28	Reinforced ring 8°	SS316*	SS316*
29	Nut	Steel	A2
30	Washer	Steel	A2
31	Studs	Steel	A2
32	Packing o'ring	EPDM*	EPDM*
33	Packing	SYNT+PTFE*	SYNT+PTFE*
34	Covers (Optional)	SS304L	SS304L

*CONSULT MATERIAL	STANDARD TEST PRESSURE:
MAXIMUM WORKING PRESSURE'S RECOMMENDED:	DN50-DN400: 6Bar
DN50-DN250: 10Bar	DN450-DN600: 4Bar
DN300-DN400: 6Bar	
DN450-DN600: 4Bar	

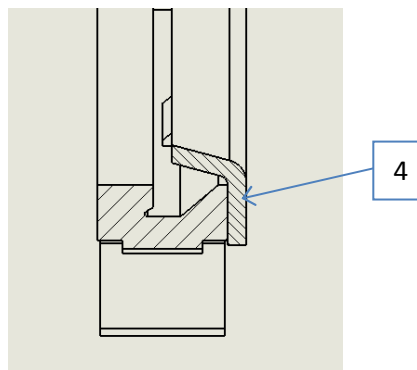
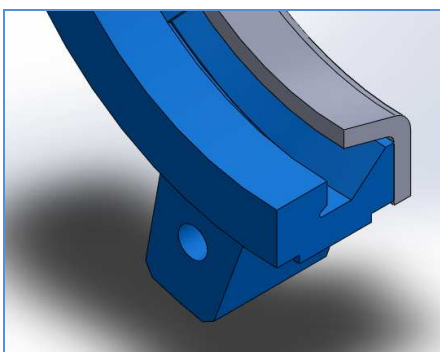
Option 1 Soft seated



Option 2 Metal seated

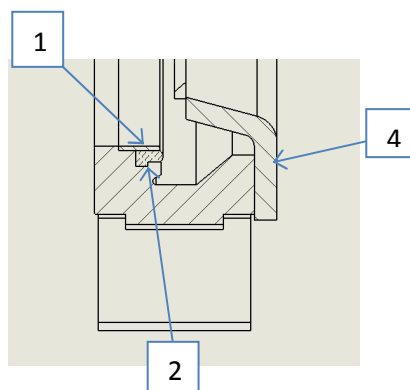
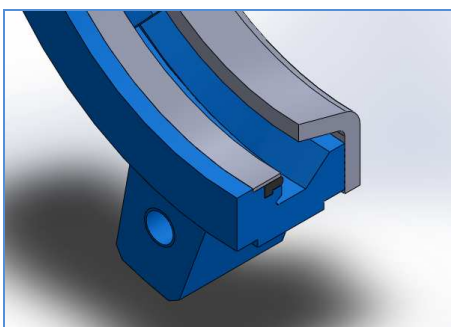


Option 3 Metal seated with
deflecting cone 15°

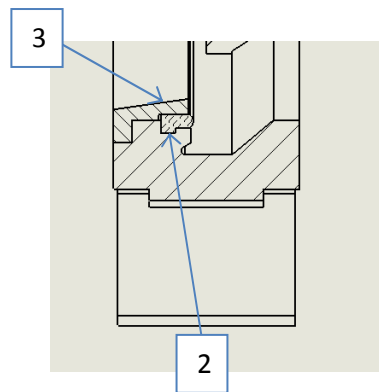
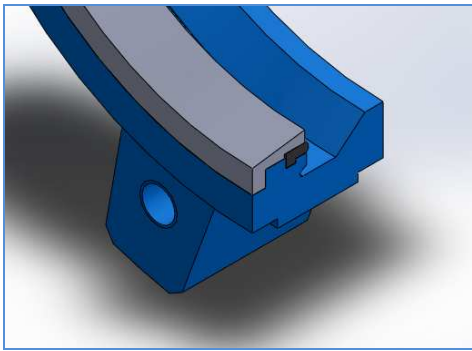


- 1 FIXING RING
- 2 SOFT SEAT
- 3 SCRAPER 8°
- 4 DEFLECTING CONE 15°

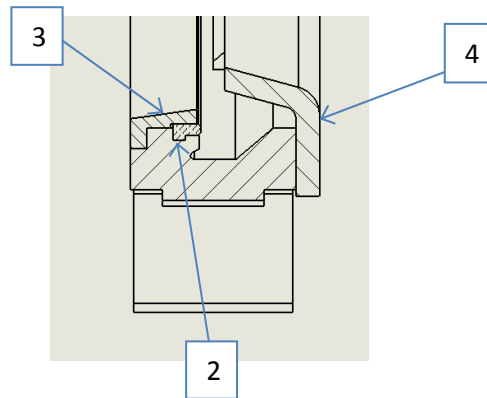
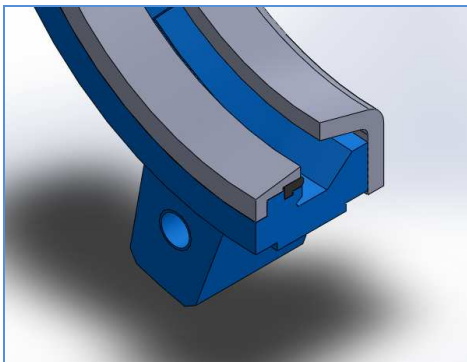
Option 4 Soft seated with
deflecting cone 15°



Option 5 Soft seated with scraper 8°

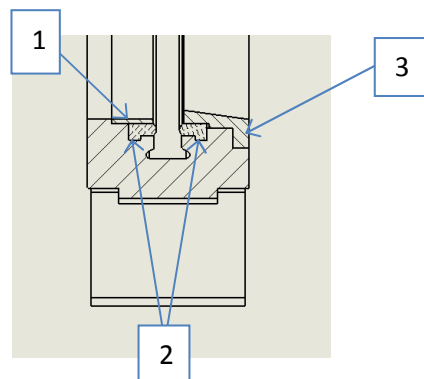
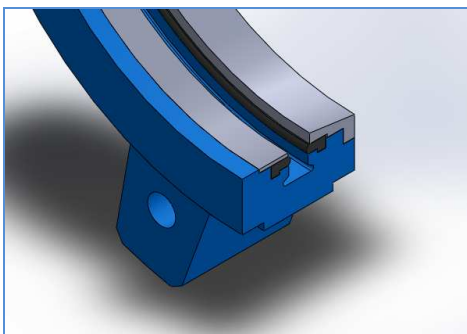


Option 6 Soft seated with deflecting cone 15° and scraper 8°



- 1 FIXING RING
- 2 SOFT SEAT
- 3 SCRAPER 8°
- 4 DEFLECTING CONE 15°

Option 7 Bidirectional



Option 8 Bidirectional reinforced

