

# Ball Valves

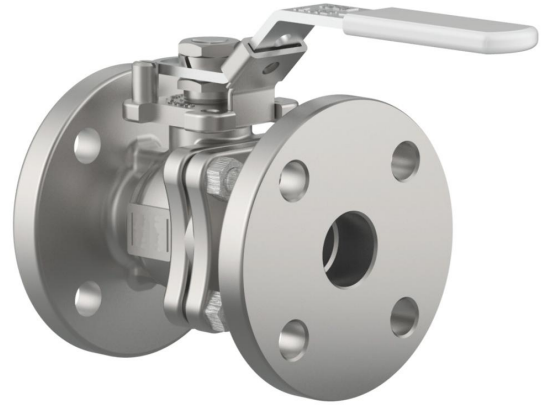
## Type 15230



### Two-piece Flanged Ball Valves, cast steel, PN16, DIN EN

full bore, seat rings PTFE, gland packing with PTFE-rings, with lever and locking device without lock, with ISO 5211 mounting pad, face-to-face dimension acc. to DIN EN 558-1 row 27 (F4) - short pattern, flanged connection acc. to DIN EN 1092-1 PN16

**Part No. 15230.X.11E000**



### Applications:

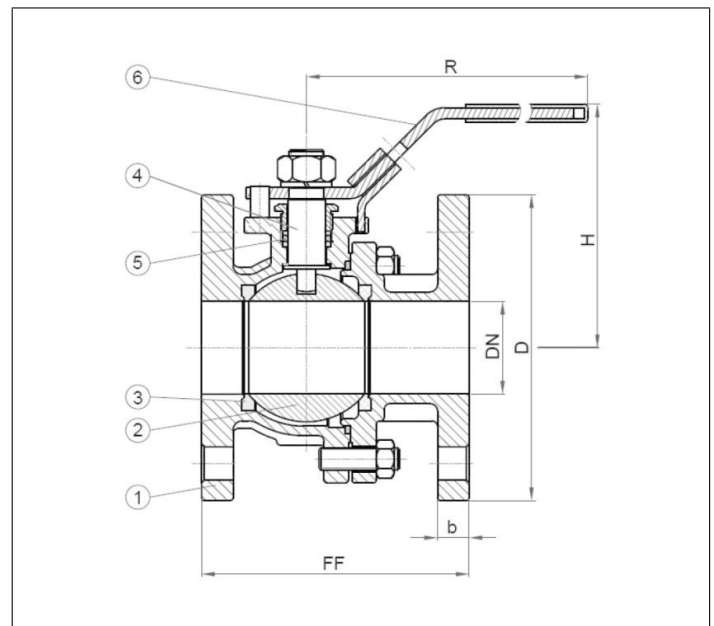
Suitable for transformer oil.

Working temperatures: -40°C / -40°F (233K) up to +220°C / +428°F (493K).

Materials	DIN EN	ASTM
1 Body	1.0619	A 216-WCB
2 Ball	1.4408	A 351-CF8M
3 Seat rings	PTFE	
4 Stem	1.4401	A 182-F316
5 Packing	PTFE	
6 Lever	1.4308	A 351-CF8

**Essential:** When ordering or requesting an offer please indicate flow medium, working pressure and working temperature.

Standard marking acc. to Pressure Equipment Directive 2014/68/EU (PED).



Type 15230	Technical data										
Nominal size	DN	15	20	25	32	40	50	65	80	100	150
Dimension code	X	0150	0200	0250	0320	0400	0500	0650	0800	1000	1500
Max. working pressure	PN	16	16	16	16	16	16	16	16	16	16
Face-to-face dimension	FF	115	120	125	130	140	150	170	180	190	350
Height	H	76	78	92	95	126	132	166	176	190	247
Flange diameter	D	95	105	115	140	150	165	185	200	220	285
Width of flange	b	12	12	13.5	14	14	18	18	20	20	22
Length of lever	R	153	153	160	160	185	185	230	230	330	750
Weight	approx. kg	3.2	3.7	3.9	5.5	7.3	10.4	16.3	21.4	25.9	95.0

Dimensions in mm. Further nominal sizes on request.

# Ball Valves

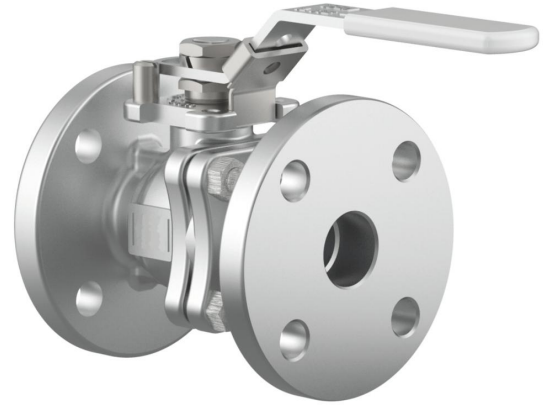
## Type 15235



### Two-piece Flanged Ball Valves, stainless steel, PN16, DIN EN

full bore, seat rings PTFE, gland packing with PTFE-rings, with lever and locking device without lock, with ISO 5211 mounting pad, face-to-face dimension acc. to DIN EN 558-1 row 27 (F4) - short pattern, flanged connection acc. to DIN EN 1092-1 PN16

**Part No. 15235.X.11E000**



### Applications:

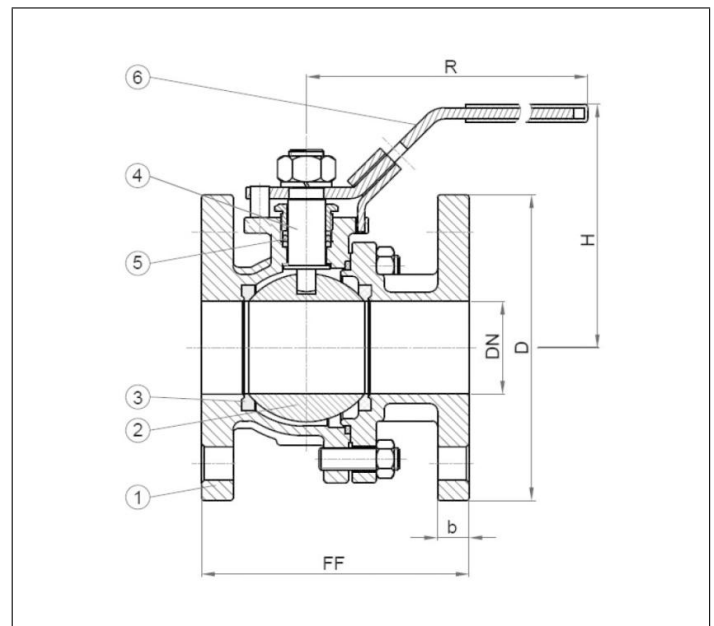
Suitable for transformer oil.

Working temperatures: -40°C / -40°F (233K) up to +220°C / +428°F (493K).

Materials	DIN EN	ASTM
1 Body	1.4408	A 351-CF8M
2 Ball	1.4408	A 351-CF8M
3 Seat rings	PTFE	
4 Stem	1.4401	A 182-F316
5 Packing	PTFE	
6 Lever	1.4308	A 351-CF8

**Essential:** When ordering or requesting an offer please indicate flow medium, working pressure and working temperature.

Standard marking acc. to Pressure Equipment Directive 2014/68/EU (PED).



Type 15235	Technical data										
Nominal size	DN	15	20	25	32	40	50	65	80	100	150
Dimension code	X	0150	0200	0250	0320	0400	0500	0650	0800	1000	1500
Max. working pressure	PN	16	16	16	16	16	16	16	16	16	16
Face-to-face dimension	FF	115	120	125	130	140	150	170	180	190	350
Height	H	76	78	92	95	126	132	166	176	190	247
Flange diameter	D	95	105	115	140	150	165	185	200	220	285
Width of flange	b	12	12	13.5	14	14	18	18	20	20	22
Length of lever	R	153	153	160	160	185	185	230	230	330	750
Weight	approx. kg	3.2	3.7	3.9	5.5	7.3	10.4	16.3	21.4	25.9	95.0

Dimensions in mm. Further nominal sizes on request.