

# Ball Valves and Spare Parts

## Type 15C01 - Ball Valve full bore



### Cryogenic Ball Valve

Unidirectional ball valve to be installed in flow direction with upstream pressure relief hole.  
 Socket weld connection for stainless steel pipes acc. to ISO 1127 or ASTM A312  
 Butt weld connection for stainless steel pipes acc. to ISO 1127 or ASTM A312  
 Female thread type NPT acc. to ANSI 1.20.1  
 Female thread type G (BSPP) acc. to ISO 228/1  
 Marking acc. to EN 1626  
 "cleaned and degreased for oxygen service"

Available accessories:

- Lock for locking device type 55394.0019.0302

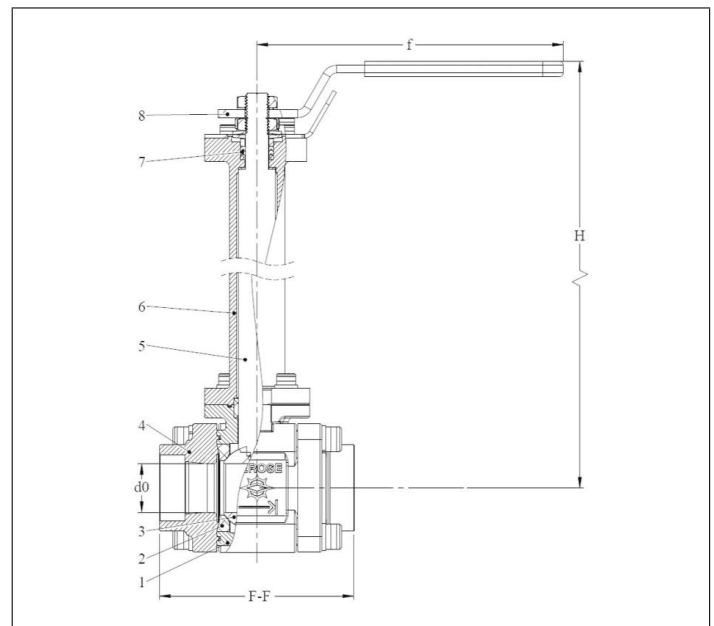


### Applications:

Approved for air gases, vapours and cryogenic liquefied gases.  
 Working temperature: -196°C / -321°F (77K) up to +65°C / +149°F (338K)

Materials	DIN EN	ASTM
1 Body	1.4409	A 351 CF3M
2 Ball seal	PCTFE	
3 Ball	1.4404	A 479 Grade 316
4 Side connection	1.4409	A 351 CF3M
5 Stem	1.4404	A 479 Grade 316
6 Bonnet extension	1.4409	A 351 CF3M
7 Gland packing	PTFE / Carbon filled (25%)	
8 Lever	1.4301	A 240 Grade 304

Standard marking acc. to Pressure Equipment Directive 2014/68/EU (PED).



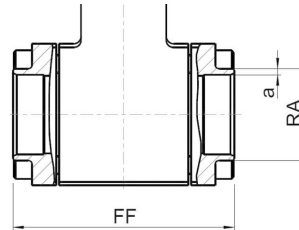
Technical data - Standard design							
Nominal size [DN]	Height (H) [mm]	Orifice (D <sub>0</sub> ) [mm]	Weight [kg]	Kvs-value [m <sup>3</sup> /h]	Cv-value [gal/min]	Length (f) [mm]	
10	296	11.5	2.5	5.7	6.6	127	
15	296	14.5	2.5	10.7	12.4	127	
20	305	19.5	3.1	24.7	28.6	157	
25	310	25.0	3.8	32.1	37.1	157	
32	376	32.0	6.5	77.9	90.1	240	
40	380	38.0	7.3	122.3	141.4	240	
50	427	50.0	13.6	193.8	224.1	420	

# Ball Valves and Spare Parts

## Type 15C01 - Ball Valve full bore



Connection types



Butt weld connection acc. to  
· ISO 1127

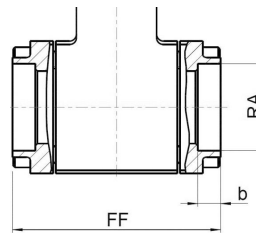
DN	Nominal Pressure [PN]	Face-to-face dim. (FF) [mm]	Outside pipe-Ø ISO (RA) [mm]	Wall thickness pipe ISO (a) [mm]	Part No.
10	100	65	13.5	2.0	15C01.A003.000002
15	50	70	21.3	2.0	15C01.A001.000002
20	100	85	26.3	2.0	15C01.A003.000014
25	50	100	33.7	2.0	15C01.A001.000006
32	70	115	42.4	2.6	15C01.A002.000008
40	70	125	48.3	3.2	15C01.A002.000014
50	50	150	60.3	2.9	15C01.A001.000010

Butt weld connection acc. to  
· ASTM A312

DN	Nominal Pressure [PN]	Face-to-face dim. (FF) [mm]	Outside pipe-Ø ASTM (RA) [mm]	Wall thickness pipe ASTM (a) [mm]	Part No.
10	100	65	13.72	1.65	15C01.A003.000005
10	100	65	13.72	2.24	15C01.A003.000006
15	50	70	21.34	2.11	15C01.A001.000013
15	50	70	21.34	2.77	15C01.A001.000014
20	100	85	26.70	2.10	15C01.A003.000017
20	100	85	26.70	2.85	15C01.A003.000018
25	50	100	33.40	2.77	15C01.A001.000015
25	50	100	33.40	3.38	15C01.A001.000016
32	70	115	42.20	2.77	15C01.A002.000011
32	70	115	42.20	3.56	15C01.A002.000012
40	70	125	48.30	2.77	15C01.A002.000017
40	70	125	48.30	3.70	15C01.A002.000018
50	50	150	60.33	2.77	15C01.A001.000017
50	50	150	60.33	3.91	15C01.A001.000018

# Ball Valves and Spare Parts

## Type 15C01 - Ball Valve full bore



Socket weld connection acc. to

- ISO 1127
- ASTM A312

DN	Nominal Pressure [PN]	Face-to-face dim. (FF) [mm]	Socket depth (b) [mm]	Socket diameter (RA) [mm]	Part No.
10	100	65	6.0	14.1	15C01.A003.000001
15	50	70	10.0	21.3	15C01.A001.000001
20	100	85	13.0	27.5	15C01.A003.000013
25	50	100	13.0	33.7	15C01.A001.000005
32	70	115	13.0	38.2	15C01.A002.000007
40	70	125	13.0	48.7	15C01.A002.000013
50	50	150	16.0	60.3	15C01.A001.000009

Female thread type

- NPT acc. to ANSI 1.20.1
- G (BSPP) acc. to ISO 228/1

DN	Nominal Pressure [PN]	Face-to-face dim. (FF) [mm]	Thread size (GW) [mm]	Part No.
10	100	65	G 3/8	15C01.A003.000003
10	100	65	NPT 3/8	15C01.A003.000004
15	50	70	G 1/2	15C01.A001.000003
15	50	70	NPT 1/2	15C01.A001.000004
20	100	85	G 3/4	15C01.A003.000015
20	100	85	NPT 3/4	15C01.A003.000016
25	50	100	G 1	15C01.A001.000007
25	50	100	NPT 1	15C01.A001.000008
32	70	115	G 1 1/4	15C01.A002.000009
32	70	115	NPT 1 1/4	15C01.A002.000010
40	70	125	G 1 1/2	15C01.A002.000015
40	70	125	NPT 1 1/2	15C01.A002.000016
50	50	150	G 2	15C01.A001.000011
50	50	150	NPT 2	15C01.A001.000012

# Ball Valves and Spare Parts

## Type 15C01 - Spare part kit



Part No. 15C01.X.E00101

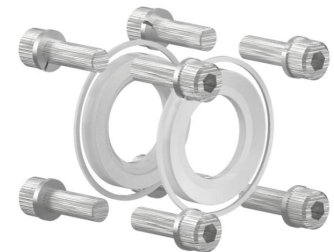
consisting of:

- 2x Seats PCTFE
- 3x Cylinder screws stainless steel (head piece top)
- 1x Cylinder screw stainless steel (locking lever)
- 4x Cylinder screws stainless steel (head piece bottom)
- 8x Cylinder screws stainless steel (side parts)
- 2x Body gaskets PCTFE
- 1x Lower stem bearing PTFE/Glass fibre (25%)
- 1x Bonnet gasket PCTFE
- 2x Lock nuts stainless steel
- 1x Nut lock cover stainless steel
- 1x Thrust washer PTFE/Glass fibre (25%)
- 1x Hex nut stainless steel
- 2x Belleville washer stainless steel
- 1x Toothed lock washer stainless steel
- 1x Gland packing Graphite/PTFE
- 1x Gland stainless steel
- 12x Spring washer stainless steel



suitable for:

Type	Nominal size
15C01	DN10 - DN50



Type 15C01	Technical data							
Nominal size	DN	10	15	20	25	32	40	50
Dimension code	.X.	0010	0015	0020	0025	0032	0040	0050

# Ball Valves and Spare Parts

## Type 15C01 - Lever



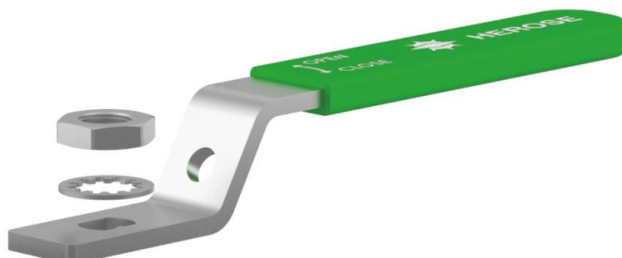
Part No. 15C01.X.E00201

consisting of:

- 1x Locking nut stainless steel
- 1x Toothed locked washer stainless steel
- 1x Lever stainless steel with vinyl cover

suitable for:

Type	Nominal size
15C01	DN10 - DN50



Type 15C01	Technical data							
Nominal size	DN	10	15	20	25	32	40	50
Dimension code	.X.	0010	0015	0020	0025	0032	0040	0050

# Ball Valves and Spare Parts

## Type 15C01 - Topwork



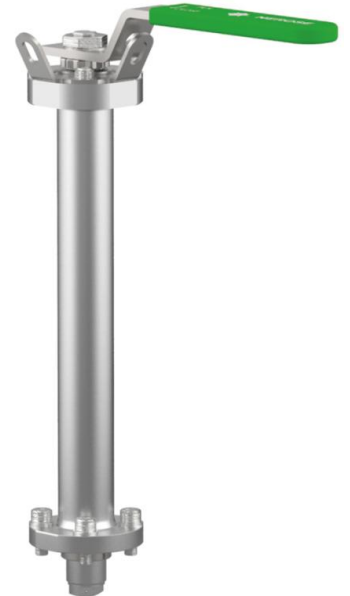
Part No. 15C01.X.E00301

consisting of:

- 1x Topwork
- 4x Cylinder screws stainless steel
- 1x Lower stem bearing PTFE/Glass fibre (25%)
- 4x Spring washer stainless steel

suitable for:

Type	Nominal size
15C01	DN10 - DN50



Type 15C01	Technical data							
Nominal size	DN	10	15	20	25	32	40	50
Dimension code	.X.	0010	0015	0020	0025	0032	0040	0050

# Ball Valves and Spare Parts

## Type 15C01 - Ball set



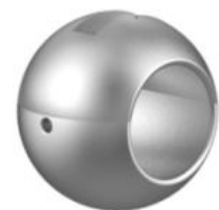
Part No. 15C01.X.E00401

consisting of:

- 1x Ball stainless steel
- 2x Seats PCTFE
- 3x Cylinder screws stainless steel (head piece top)
- 1x Cylinder screw stainless steel (locking lever)
- 4x Cylinder screws stainless steel (head piece bottom)
- 8x Cylinder screws stainless steel (side parts)
- 2x Body gaskets PCTFE
- 1x Lower stem bearing PTFE/Glass fibre (25%)
- 1x Bonnet gasket PCTFE
- 2x Lock nuts stainless steel
- 1x Nut lock cover stainless steel
- 1x Thrust washer PTFE/Glass fibre (25%)
- 1x Hex nut stainless steel
- 2x Belleville washer stainless steel
- 1x Toothed lock washer stainless steel
- 1x Gland packing Graphite/PTFE
- 1x Gland stainless steel
- 12x Spring washer stainless steel

suitable for:

Type	Nominal size
15C01	DN10 - DN50



Type 15C01	Technical data							
Nominal size	DN	10	15	20	25	32	40	50
Dimension code	.X.	0010	0015	0020	0025	0032	0040	0050