

LARSLAP MODEL FLH

For touch up, inspection and lighter grinding.

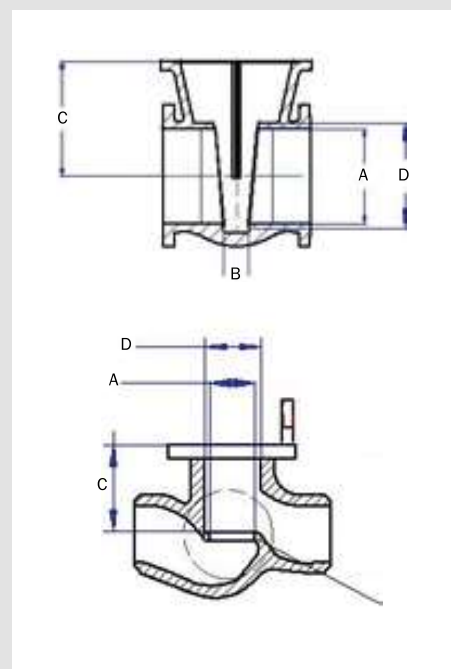
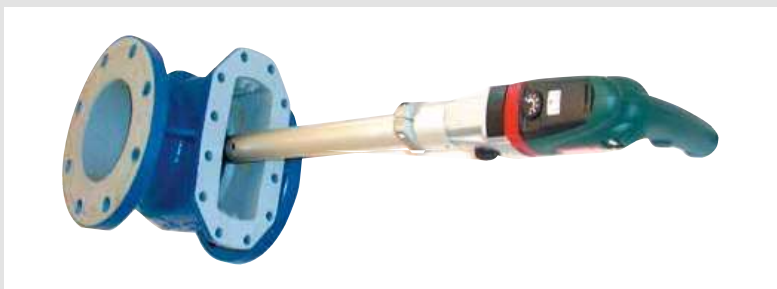
Ideal for gate, globe, check, safety, and control valves.

- Suitable for valves with flat seats \varnothing 50–200 mm (2"–8")
- Individually driven grinding heads for absolute flat seats
- Available with compressed air drive unit (6–7 bar), electric battery drive unit or electric 110/220V drive unit
- All drive units are reversible and have variable grinding speed
- Easy to change between gate and globe valve grinding
- Only three sizes of abrasive discs required for full seat range
- Self-adhesive grinding discs for fast attachment to the grinding heads.
- Supplied with rough, medium and fine grinding discs
- Heavy duty carrying/storage case for the complete machine with all the necessary accessories
- Grinding heads for angled seats are available
- Self-adhesive grinding discs 40 to 1000 grit are available
- Diamond grinding discs available
- Adjustable guiding plates for extra stability available

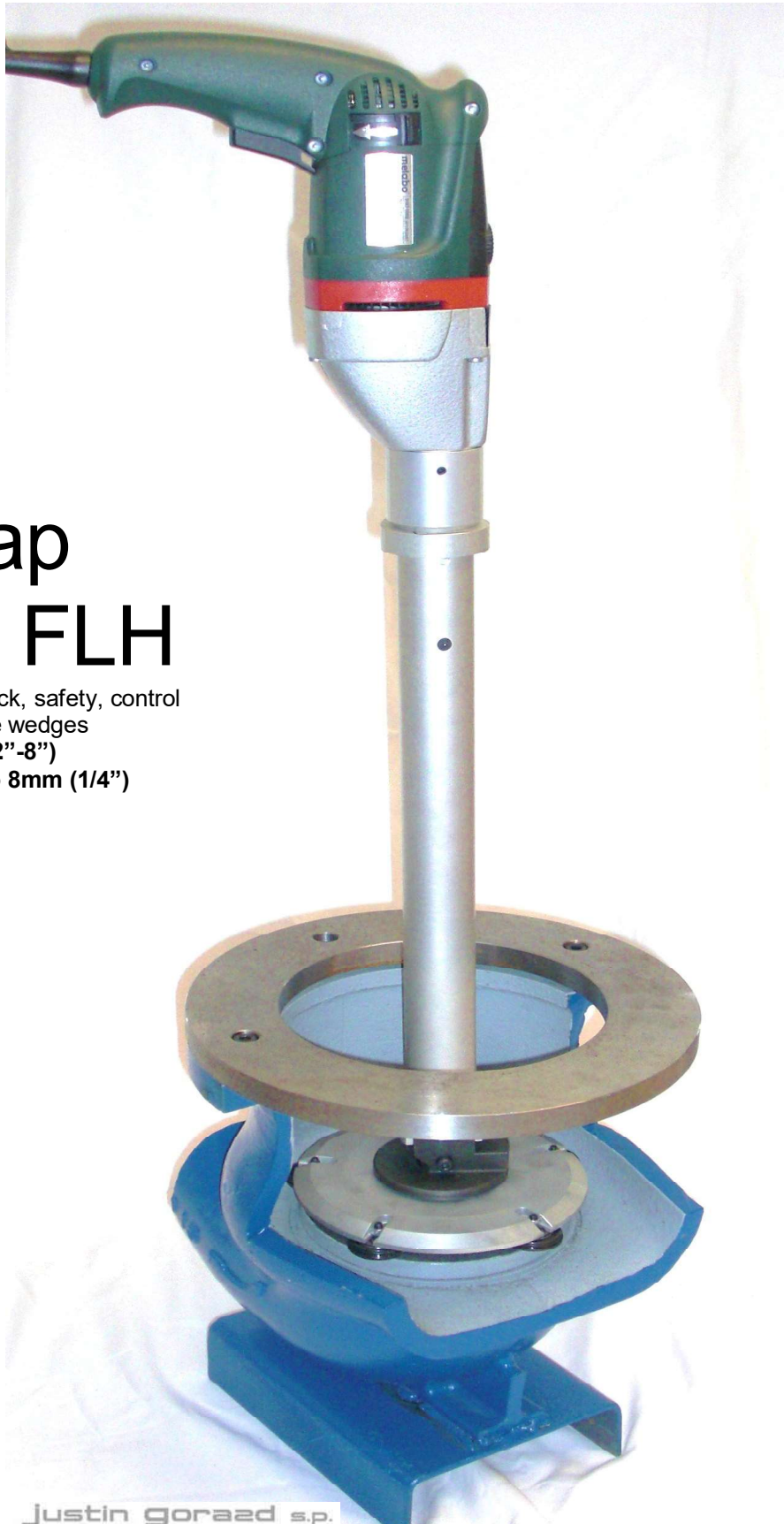


Model FLH

A:	50–200 mm (1,6"–8")
B:	39 mm (1,56") min
C:	100 mm (4") min 600 mm (24") standard 1000 mm (60") max (option)
D:	80–257 mm (3,2"–10,8")
Carrying case:	750 x 615 x 135 mm (30" x 24" x 5")
Total weight:	17 kg (37,5 lb)



Tools with the cutting edge



LarsLap Model FLH

Suitable for gate, check, safety, control valves and gate valve wedges

Range: 50-200mm (2"-8")

With option down to 8mm (1/4")



Justin goraed s.p.
atis
www.armature.si

LarsLap®

Tools with the cutting edge

LarsLap – the optimal grinding system



Repairing leaking valves in industrial pipelines is a laborious operation involving extended downtime, production losses and substantial, unwanted costs.

Losses are minimized if valves can be reground *in situ*, precluding the need to dismantle and remove defective valves from the pipeline.

LarsLap'portable, industrial valve grinders with their patented design concept are the proven solution for on-line valve reconditioning.

Available in overlapping sizes, LarsLap grinders combine unsurpassed versatility with exceptional ease of handling and operation.

A combination guaranteed to give LarsLap grinders cutting edge performance, whatever the valve location.

Welcome to the world of LarsLap

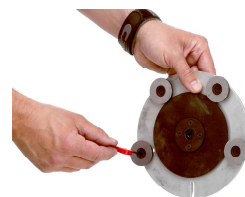
LarsLap model FL

The best way to a perfect result

On-line grinding for fast results

LarsLap model FLH's unique, handheld system is easy assemble so you get started fast. The individually driven grinding heads gives you a fast and perfect result every time.

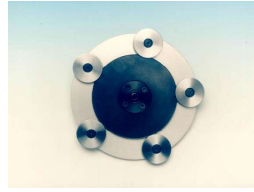
The design of the FLH makes it possible to use different drive units to the same equipment.



Tools with the cutting edge

Individually driven grinding heads for perfect results

The drive heads on LarsLap model FLH incorporate individually O-ring driven grinding discs, permitting rapid and efficient grinding of exceptionally smooth, flat surfaces for tightest possible seats.



Versatile

The Model FLH can easily be used to grind conical seats by using our unique centering system. You can also choose from three different driving units, pneumatic, electrical, battery or a combination of all three and still be using the same drive shaft.

To cover your needs the FLH can be equipped with a range of driving and grinding heads, permitting numerous combinations within the 8-200 mm range (1/4"-8").

Horizontal or vertical grinding

With the model FLH you have the option to grind globe valves (model FLH-B), gate valves and wedges (FLH-C) or both (FLH-BC).



Complete with carrying case

Every LarsLap model FL is supplied with a rugged, customized carrying/storage case complete with accessories.

The case is fitted with specially designed compartments molded to the shape of each component, allowing operators to confirm at glance that all items are in place before and after grinding.

Unique flexibility

All LarsLap grinders are designed for operational compatibility. They can be driven by pneumatic or electric powered motors. Equipment purchased initially for relatively small diameter ranges can be conveniently upgraded to deal with larger ranges at a later date.

This unique degree of flexibility means that grinders can be readily adapted to suit a wide variety of customer needs.



LarsLap Grinding paper

Get the most out of your machine by using LarsLap original grinding paper. LarsLap grinding paper is tested, proved and perfectly fitted to suit your machine under the conditions it will be working in. (from 24 grit to 3mic)

LarsLap model FLH

A selection of standard models
Other configurations and
accessories are available on
request

FLH B 150

50-150mm
(2"-6")
Globe, control
and safety
valves

FLH B 200

50-200mm
(2"-8")
Globe, control
and safety
valves

FLH C 150

50-150mm
(2"-6")
Gate and check
valves

FLH C 200

50-200mm
(2"-8")
Gate and check
valves

FLH BC 150

50-150mm
(2"-6")
Gate, check,
globe, control
and safety
valves

FLH BC 200

50-200mm
(2"-8")
Gate, check,
globe, control
and safety
valves

Drive shaft for gate valves	option	option	•	•	•	•
Drive shaft for globe valves	•	•	option	option	•	•
Electric drive unit 110 or 220V	option	option	option	option	option	option
Electric drive unit battery operated 110 or 220V	option	option	option	option	option	option
Pneumatic drive unit (6-7 bar)	option	option	option	option	option	option
Driving plate FL Ø 40mm (1 ½")	option	option	option	option	option	option
Driving plate FL Ø 50mm (2")	option	option	option	option	option	option
Driving head FL ø 65mm (2,5")	•	•	•	•	•	•
Driving head FL ø 80mm (3")	•	•	•	•	•	•
Driving head FL ø 100mm (4")	•	•	•	•	•	•
Driving head FL ø 125mm (5")	•	•	•	•	•	•
Driving head FL ø 150mm (6")	•	•	•	•	•	•
Driving head FL ø 175mm (7")	option	option	option	option	option	option
Driving head FL ø 200mm (8")	option	•	option	•	option	•
FL grinding head ø28mm (1,1")	•	•	•	•	•	•
FL grinding head ø35mm (1,4")	•	•	•	•	•	•
FL grinding head ø 40mm (1,6")	•	•	•	•	•	•
FL grinding head ø 50mm (2")	option	option	option	option	option	option
FL grinding head ø 70mm (2,8")	option	option	option	option	option	option
Adjustable guiding plates	option	option	option	option	option	option
Conical segment kit in different angles Ø65 – 200mm (2 ½" – 8")	option	option	N/A	N/A	option	option
Centralizing cone FLH I, II, III	option	option	N/A	N/A	option	option
K kit, flat seats sizes from 8mm-50mm (1/4"-2")	option	option	option	option	option	option
K conical kit, sizes from 8mm-50mm (1/4"-2")	option	option	option	option	option	option
Heavy duty transport and storage case with tools required to operate the FLH	•	•	•	•	•	•
Grinding discs rough, medium and fine ø 28/35/40mm	•	•	•	•	•	•

Possible range for model FLH

- A= 40-200 mm (1,6"-8")
- B= 39 mm (1,56") min
- C= 100mm (4") min
600mm (24") standard
1000 mm (60") max (option)
- D= 80- 257 mm (3,20"-10,8")

Carrying case Model FLH-BC 200:
750x615x135mm (30"x24"x5")
Total weight Model FL-BC 200:
17 kg (37,5 lb)

