

## LARSLAP MODEL C

# A portable, easy to mount, cutting, milling and grinding machine.

Ideal for globe, safety and control valves.



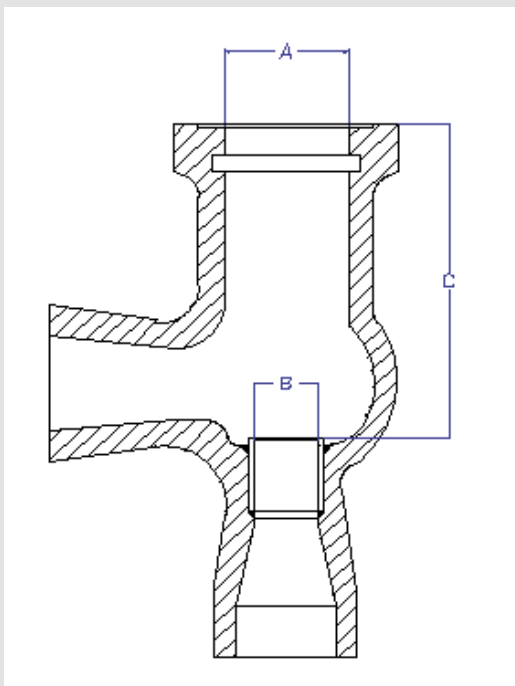
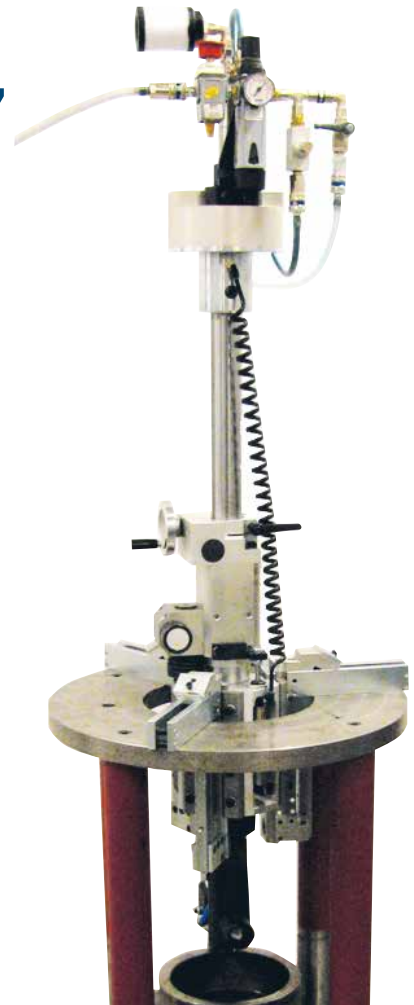
As a rule, control and reduction valves of the globe type have an integrated plug that narrowly constrains the tolerances for the seat position. In the event of damage to the seat, it is often unfeasible or extremely expensive to dismantle the valve from the pipe system in order to repair it in the workshop. If the damage is to be repaired in situ, the device to be used must be of stable construction without being bulky or heavy.

As these valves show a large range of dimensional variation, the repair device must be adaptable to the largest possible mounting and seat area.

Possible repairs include the grinding of gasket surfaces damaged by crushing

or abrasion, of damage cylindrical a plane control areas, various treatments of gasket welds and cutting the seats in situ.

The LarsLap model C has been designed to ensure flexibility as well as speed and ease of handling.



### Model C

Model C base unit comes in three sizes:

#### Model C1

B:  $\varnothing$  25–250 mm (1"–10")  
A min: 80 mm (3")  
A max: 300 mm (12")  
C max: 600 mm (24")

#### Model C2

B:  $\varnothing$  50–400 mm (2"–16")  
A min: 250 mm (10")  
A max: 600 mm (24")  
C max: 1000 mm (40")

#### Model C3

B:  $\varnothing$  300–800 mm (12"–32")  
A min: 300 mm (12")  
A max: 900 mm (36")  
C max: 1000 mm (40")