

LARSLAP MODEL D

Unique self centering, easy to use clamping system.

Ideal for globe, control and safety valves with flat or angled seats.

This machine is mounted to the valve body using a unique three segments, adjustable, self centering jaw chuck, allowing a quick and accurate set up whether in the workshop or on site. Available with electric or pneumatic drive, the Model DF/DG valve grinding machine system can be supplied as a standard kit or customized to suit your exact requirements.

- Suitable for valves with flat and angle seats \varnothing 50–1300 mm (2"–52")
- Absolutely flat sealing surface
- Individually driven grinding heads
- Air drive unit as standard 6–7 bar
- Variable grinding speed on all drive units
- Fine adjustment of pressure for precise grinding of surface
- Self-adhesive grinding discs for quick attachment to the grinding heads
- Supplied with rough, medium and fine grinding discs
- Heavy duty carrying/storage case for the complete machine with all the necessary accessories
- Cone segments in different angles available
- Self-adhesive grinding discs 40 to 1000 grit are available
- Diamond grinding discs available



Model D

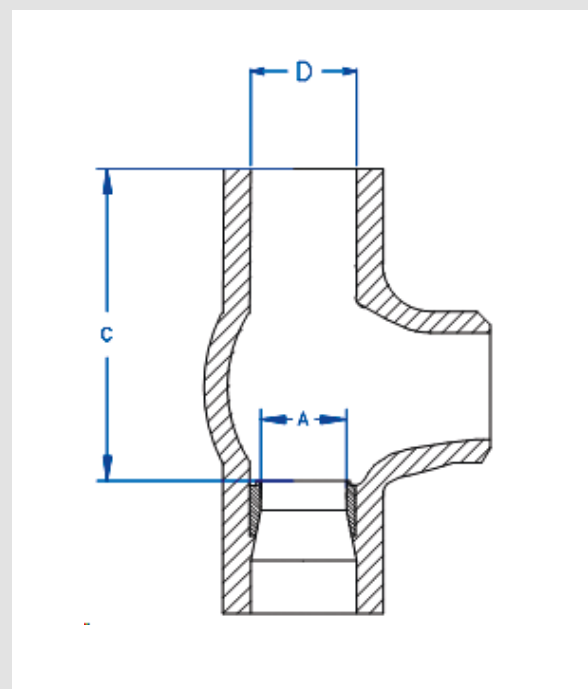
Model D base unit comes in two sizes:

Model DF

Internal diameter	A	40–300 mm
External diameter	D	80–357 mm
Maximum depth	C	500 mm

Model DG

Internal diameter	A	140–1361 mm
External diameter	D	150–1371 mm
Maximum depth	C	1000 mm



LarsLap Model DF

Suitable for globe, safety and control valves

Range: 65-300mm (2 1/2"-12")

With option down to 8mm (1/4")



Justin goraad s.p.
atis
www.armature.si

LarsLap[®]

Tools with the cutting edge

LarsLap – the optimal grinding system



Repairing leaking valves in industrial pipelines is a laborious operation involving extended downtime, production losses and substantial, unwanted costs.

Losses are minimized if valves can be reground *in situ*, precluding the need to dismantle and remove defective valves from the pipeline.

LarsLap'portable, industrial valve grinders with their patented design concept are the proven solution for on-line valve reconditioning.

Available in overlapping sizes, LarsLap grinders combine unsurpassed versatility with exceptional ease of handling and operation.

A combination guaranteed to give LarsLap grinders cutting edge performance, whatever the valve location.

Welcome to the world of LarsLap

LarsLap model DF

The best way to a perfect result

On-line grinding for fast results

LarsLap model DF's unique, handheld and mounting system is easy assemble so you get started fast. The individually driven grinding heads gives you a fast and perfect result every time.

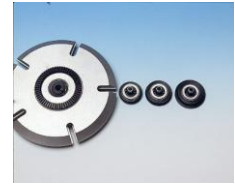
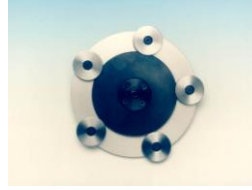
The design of the DF makes it possible to use different drive units to the same equipment.



Tools with the cutting edge

Individually driven grinding heads for perfect results

The driving heads on LarsLap model DF incorporate individually gear driven grinding heads, permitting rapid and efficient grinding of exceptionally smooth, flat surfaces for tightest possible seats.



Versatile

The Model DF can easily be used to grind conical seats by using our unique centering system. You can also choose from two different driving units, pneumatic or electrical or a combination of both and still be using the same drive shaft.

To cover your needs the DF can be equipped with a range of driving and grinding heads, permitting numerous combinations within the 8-300 mm range (1/4"-12").

Centering systems developed for the user

The LarsLap model DF's unique self centering systems is quick and easy to set up. Use the small ones for the smaller valves and the bigger ones with LarsLap's clamping system for the tougher jobs.

The self centering system together with the guiding plates makes it a breeze to grind conical valves



Complete with carrying case

Every LarsLap model DF is supplied with a rugged, customized carrying/storage case complete with accessories.

The case is fitted with specially designed compartments molded to the shape of each component, allowing operators to confirm at glance that all items are in place before and after grinding.

Unique flexibility

All LarsLap grinders are designed for operational compatibility. They can be driven by pneumatic or electric powered motors. Equipment purchased initially for relatively small diameter ranges can be conveniently upgraded to deal with larger ranges at a later date.

This unique degree of flexibility means that grinders can be readily adapted to suit a wide variety of customer needs.



LarsLap Grinding paper

Get the most out of your machine by using LarsLap original grinding paper. LarsLap grinding paper is tested, proved and perfectly fitted to suit your machine under the conditions it will be working in. (from 24 grit to 3mic)

Larslap model DF

A selection of standard models
Other configurations and accessories are available
on request.

	DF B 200	DF B 300	DF AB 200	DF AB 300
	65-200mm (2 1/2" -8")	65-300mm (2 1/2"-12")	65-200mm (2 1/2"-8")	65-300mm (2 1/2"-12")
	Globe, control and safety valves	Globe, control and safety valves	Globe, control and safety valves	Globe, control and safety valves

Drive shaft for globe valves 400mm	•	•	•	•
Drive shaft for globe valves 600mm	option	option	option	option
Electric drive unit 110 or 220V	option	option	option	option
Pneumatic drive unit (6-7 bar)	option	option	option	option
Driving plate FL Ø 40mm (1 1/2")	option	option	option	option
Driving plate FL Ø 50mm (2")	option	option	option	option
Driving head FL Ø 65mm (2,5")	•	•	•	•
Driving head FL Ø 80mm (3")	•	•	•	•
Driving head FL Ø 100mm (4")	•	•	•	•
Driving head FL Ø 125mm (5")	•	•	•	•
Driving head FL Ø 150mm (6")	•	•	•	•
Driving head FL Ø 175mm (7")	option	option	option	option
Driving head FL Ø 200mm (8")	•	•	•	•
Driving head FL Ø 250mm (10")	option	•	option	•
Driving head FL Ø 300mm (12")	option	•	option	•
Driving head FL Ø 350mm (14")	option	option	option	option
Driving head FL Ø 400mm (16")	option	option	option	option
FL grinding head Ø28mm (1,1")	•	•	•	•
FL grinding head Ø35mm (1,4")	•	•	•	•
FL grinding head Ø 40mm (1,6")	•	•	•	•
FL grinding head Ø 50mm (2")	option	option	option	option
FL grinding head Ø 70mm (2,8")	option	option	option	option
Adjustable guiding plates	option	option	option	option
Conical segment kit in 30°, 60° and 90° angles	option	option	option	option
Conical segment kit in 30°, 40°, 60°, 75° and 90°	option	option	option	option
Centralizing cone FLH I, II, III	option	option	option	option
Centralizing cone type D with clamping system and fine height adjustment	•	•	•	•
K kit, flat seats sizes from 8mm-50mm (1/4"-2")	option	option	option	option
K conical kit, sizes from 8mm-50mm (1/4"-2")	option	option	option	option
Heavy duty transport and storage case with tools required to operate the DF	•	•	•	•
Grinding discs rough, medium and fine Ø 28/35/40mm	•	•	•	•

Possible range for model DF

A=	8-400 mm (1/4"-16")
C=	100mm (4") min 400mm (16") standard 600mm (24") max (option)
D=	80- 457 mm (3,20"-10,8")

Carrying case model DF-AB 200
Dimension:
950x520x370mm (38"x21"x15")
Total weight:
50 kg

