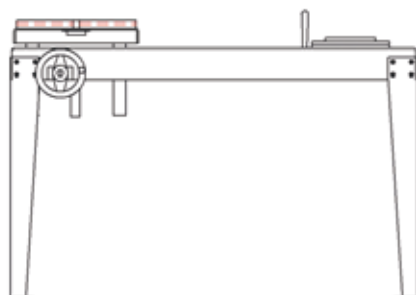
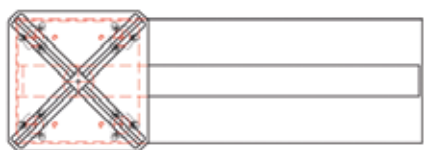


LARSLAP MODEL STC

## Stationary when needed.

The STC table makes it possible to work in the shop with your LarsLap equipment just as you would do with a stationary machine. In most cases actually faster and easier than working with an ordinary stationary machine.

- Quick and easy set up
- Works with S, FL and G
- Gate and globe valve grinding
- Lifting table available depending on size range
- Creates a good working environment



STC with lifting table suitable for S, FL and G

STC with external lifting table suitable for large range Model G

